

South Kitsap Industrial Area

Example A City of Port Orchard/ West Sound Utility District Sewer Service

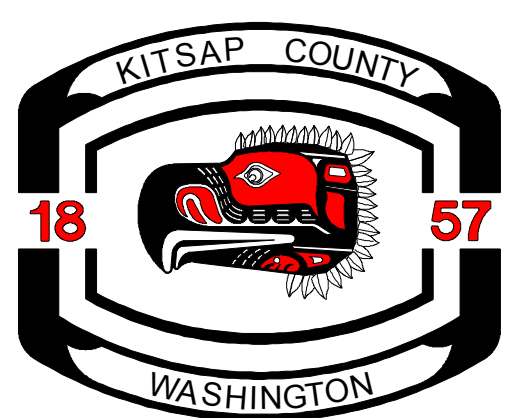
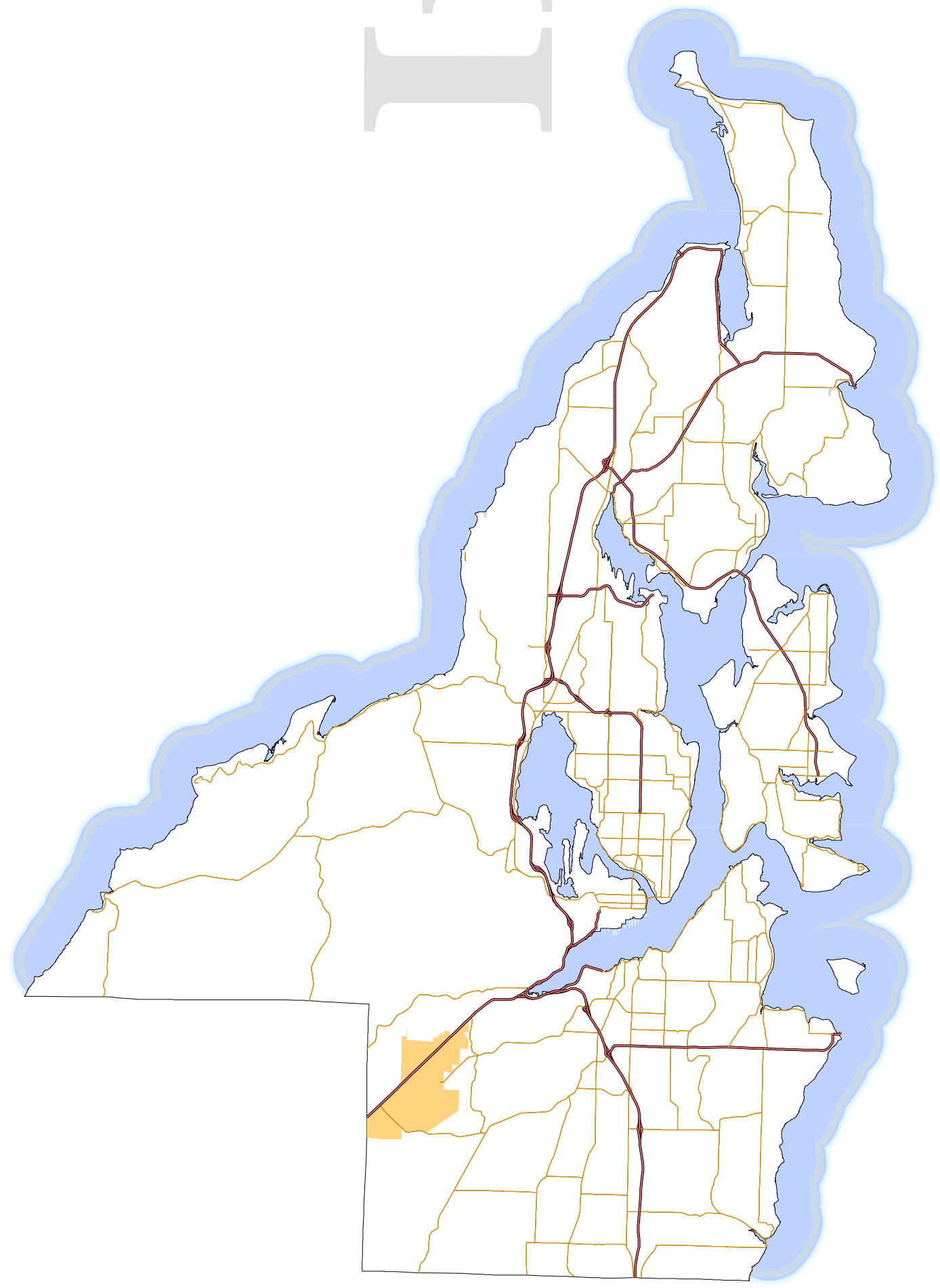
- Proposed Wastewater Pipelines**
- 6" Force Main
 - 8" Gravity Main
- Proposed Pump Station**
- PS Pump Station
- Port of Bremerton Sewer**
- Existing Port Orchard Sewer Lines
- Unincorporated Urban Growth Area**
- Incorporated City
 - Tax Parcels
- Waterbodies (defined in WAC 222-16-030)**
- WaterBody Cartographic Feature Code
- Bay, estuary, Puget Sound
 - Lake, Pond, Reservoir, Gravel pit or quarry filled with water
 - Marsh, wetland, swamp, bog
- Watercourses (defined in WAC 222-16-030)**
- Fish Habitat Water Type Code
- (S) Designated Shoreline of the State
 - (F) Fish Habitat
 - (N) Non-fish Habitat
 - (U) Unknown, unmodeled hydrographic feature.

This map was created from existing map sources, not from field surveys. While great care was taken in using the most current map sources available, no warranties of any sort, including accuracy, fitness, or merchantability accompany this product. The user of this map assumes responsibility for determining its suitability for its intended use.

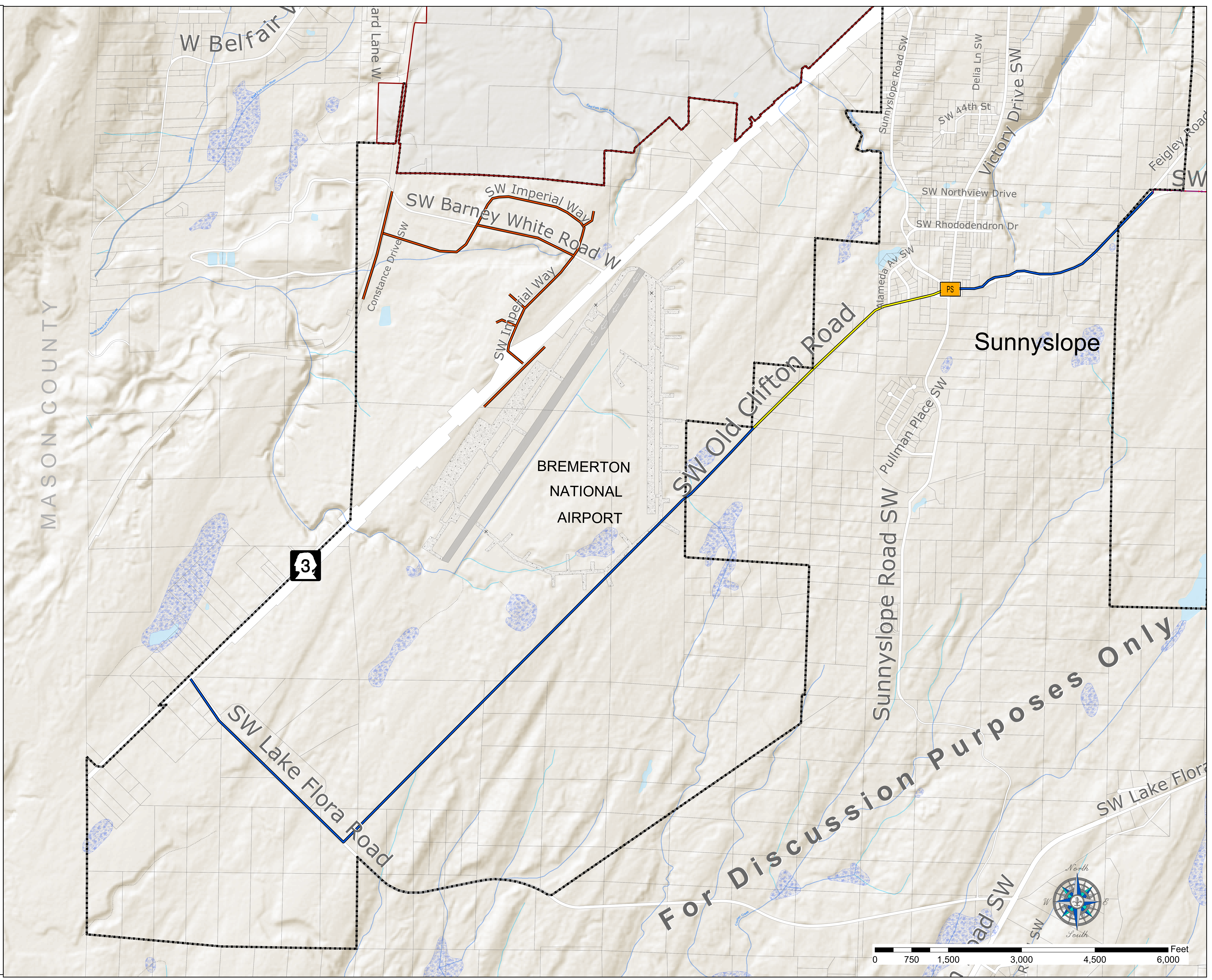
* THIS MAP IS NOT A SUBSTITUTE FOR FIELD SURVEY *

DRAFT

Map Date: March, 2008



Kitsap County Department of Community Development
614 Division Street, MS-36
Port Orchard, Washington 98366
VOICE (360) 337-7181 * FAX (360) 337-4925



For Discussion Purposes Only